



GZ100 - Ottakring Modern

1160 Wien, Gallitzinstraße 100



SIEBEN DÖRFER
IMMOBILIEN

TOP 9 - Variante 2

Lage 1.+2. DG
Zimmer 3

1. DG

Vorraum 7,58 m²
WC 5,91 m²

2. DG

Wohnküche 57,36 m²
Zimmer 13,27 m²
Zimmer 2 10,42 m²
Bad 9,66 m²
Abstellraum 3,18 m²
WC 1,42 m²

WNF 108,80 m²

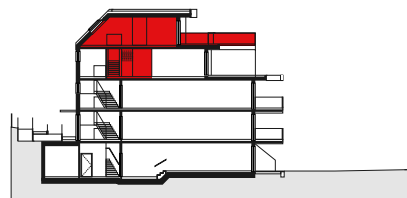
FREIFLÄCHEN

Balkon 7,45 m²
Terrasse 48,98 m²

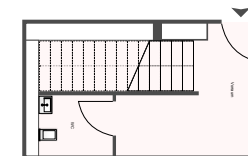
**IHRE ZUKUNFT HAT
EIN ZUHAUSE**

Sieben Dörfer Immobilien
Himmelfortgasse 1/8
1010 Wien

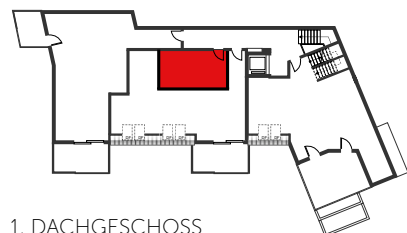
Email: office@7doerfer.at
Telefon: +43 1 9392929



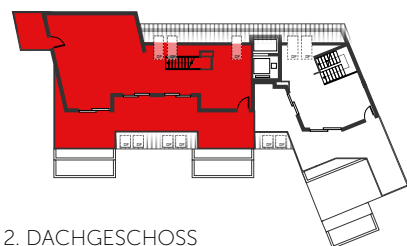
SCHNITT



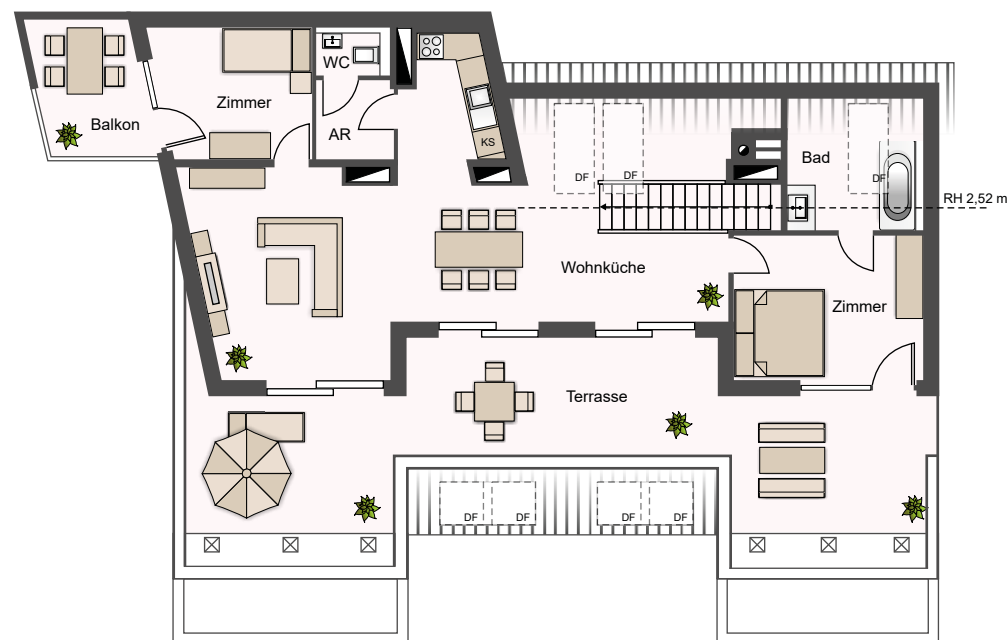
EINGANG 1. DG



1. DACHGESCHOSS



2. DACHGESCHOSS



GRUNDRIS 2. DG